

Productivity in Real-time

Seven



WITH @HD Technology

 **CrystaLine**

*Maximizing the efficiency
of ultrasound scanning*

 **@saote**



Improved imaging in difficult to scan patients

Major technical improvements provided by CrystaLine include the **CPI Technology** to increase depth of field, improving the imaging of deep structures in difficult-to scan individuals.

Adjustable imaging by the operator

The new **XView+ speckle reduction** technology which can be adjusted by the operator is now available with CrystaLine. It produces an optimal personalized image for every single clinician in a wide range of applications.

Increased Diagnostic Confidence

CrystaLine demonstrates extended configuration features, giving the physician the possibility to best perform in advanced procedures. It incorporates innovative solutions that now enable clinicians to confidently use ultrasound in several examinations.

Optimised Workflow

CrystaLine is aiming on reduced examination time and better workflow by means of a wide range of automatic process functions for Imaging, Doppler, Post-Processing, Measurements, Archiving and Connectivity.





eHD is the Esaote technology to innovate ultrasound imaging and improve the systems' use.

It represents our attention to the diagnostic value, optimizing all the aspects of the chain a signal has to travel through, starting from the echo generated by the patient's body up to the arrival on the system's monitor. It maximizes the efficiency of ultrasound scanning, leaving the sonographer free to concentrate on the patient.

The quality that improves your diagnostic confidence.

@HD Technology

@HD

iQ Probes



@HD
Pulser



@HD
Processing



@HD
Doppler



@HD



MyLabTMSeven



iQ Probes

- Active Matrix Composite Material
- Multiple Adaptive Layers
- Bi-Con Geometric Lens
- Heating Efficiency Control

MyLabTMSeven offers a wide range of iQ Probes

In addition to convex, linear and phased array, several special probes (such as endocavity, trans-esophageal, intraoperative, volumetric,...) can be connected.

MyLabTMSeven, thanks to four multi-size connectors, offers the compatibility with different type of probes. Examination can be comfortably performed, with the right tool and without any waste of time.



Esaote appleprobe, an innovative approach in ergonomics

The appleprobe keeps hand and wrist in their natural alignment distributing the grip throughout the whole hand as One grips an apple. You can relieve tension on the fingers and the wrist, when not scanning, simply by keeping the probe between the fingers.

The appleprobe has been designed for both grip:

- innovative palm hold
- conventional pincer hold



Your Diagnostic Confidence

CrystaLine



The MyLab™ Seven is an innovative system able to deliver high-class performance in a compact size.

The Esaote eHD Technology reflects the main philosophy of this system: Productivity in Real-time.

This technology provides fast, optimized data transfer, which leads to an improved user comfort and clinical outcome as well as department throughput and competence.

The MyLab™Seven is the right choice to maximize the efficiency of ultrasound scanning.

Ergonomics

User comfort and design reflected in diagnostic confidence and clinical results.

Esaote has always been recognized as a leader in ergonomics, design and simplicity of use. Our design concept recognizes that the sonographer has the most important role in clinical workflow. The comfort and satisfaction of the users is reflected in increased diagnostic confidence.



- Wide image size
- Articulated monitor arm
- Easy rotation and height adjustment
- Sliding alphanumeric keyboard



Simplicity

- Designed for productivity
- 4 probe connectors
- Wide range of transducers (2D, 3D)
- Compact footprint and easy mobility
- Stand-by battery



MyLabSeven™



eTouch



A standard ultrasound system becomes a personal application-specific diagnostic tool.

Customized settings and multiple functions can be organized according to clinical practice and preferences and then easily recalled by just pressing a button.



Extending productivity

The intelligent software and the large sized touch-screen allow unique features to be delivered with MyLab™Seven. The Productivity-Oriented Platform is the core of the architecture: easy access, personalized settings and functions, standardized clinical protocols and immediate settings.

@Touch

By pressing the @Touch button, the user can display the controls and functions that he really needs in clinical practice: improved comfort and reduced examination time.

@Touch dedicated session allows the user to record different macros. Based on any single user's needs and preferences, multiple functions can be included with just one touch: less keystrokes and faster diagnosis.

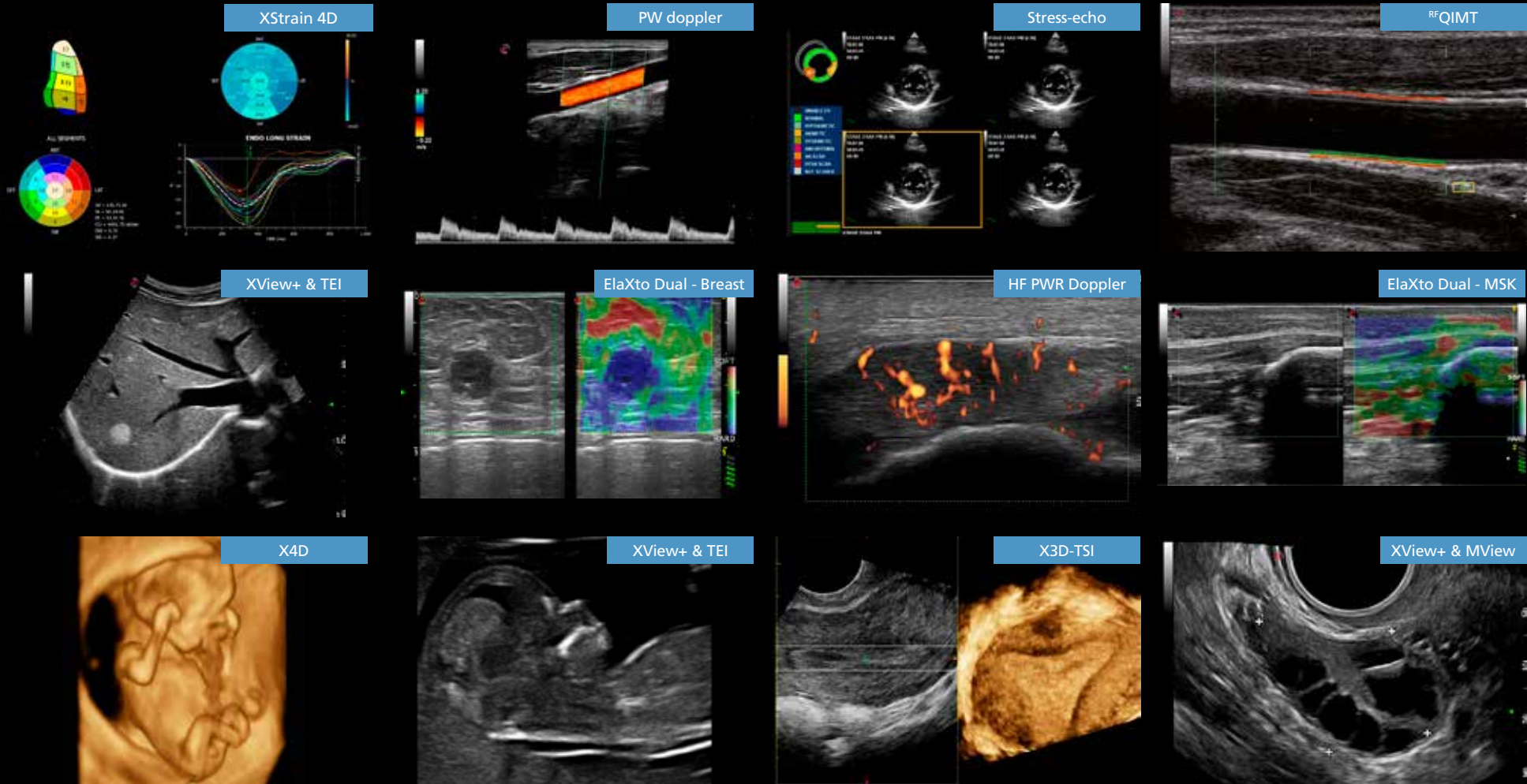
SmartTouch

Wide ranging image settings, user preferences and clinical targets, normally require time and attention. Smart-touch delivers dedicated settings for any anatomical district. Optimal images are displayed with just one touch.



Stunning Images within reach

MyLabSeven™



Wireless Ultrasound



- Extended export capability to PC (Windows®, Mac®) and mobile devices (tablets, smart-phones, etc...)
- Easy networking, standard and wireless
- DICOM and IHE compliance



The new app to visualize images and videos on mobile devices

MyLab App



MyLabTMSeven

Productivity in Real-time

WITH
@HD
Technology

**CrystaLine**

Maximizing the efficiency of ultrasound scanning

160000012MAK Ver. 05



Esaote S.p.A. - sole-shareholder company
Via Enrico Meloni, 77 16152 Genova, ITALY, Tel. +39 010 6547 1, Fax +39 010 6547 275, info@esaote.com

Windows® is a registered trademark of Microsoft Corporation.
Mac® is a registered trademark of Apple Inc.
Technology and features are system/configuration dependent. CnTI™: The use of Contrast Agents in the USA is limited by FDA to the left ventricle opacification and to characterization of focal liver lesions.
MyLab™Desk SW only viewer is not intended or provided for an official diagnostic interpretation. Specifications subject to change without notice. Information might refer to products or modalities not yet approved in all countries.
Product images are for illustrative purposes only. For further details, please contact your Esaote sales representative.

Please visit us online
for more information

