

MyLabTMX8 VET

Designed
To Be Unique



NEVER STOP ELEVATING YOUR VET EXPERIENCE.

esaote
veterinary

MyLab™X8VET

MyLab™X8VET represents an outstanding source of innovation and technology, designed to accelerate your workflow.

MyLab™X8VET offers: an LCD monitor with the latest technology, a smart stand-by function and a fast boot time, Windows® 10 O.S., zero-click automation functions, and cutting-edge ergonomics.

Achieve infinite results with its highly intuitive user interface and advanced clinical tools, tailored to suit your needs.

The MyLab™X8VET system sets a standard of high performance, offering a brand new ultrasound experience.



Windows® 10



Large 21" monitor

LCD monitor with the latest technology, ensuring the best enhancement of the details and a full-screen mode.



Transducer connectors

Up to 5 transducer connectors enabling fast probe switch to adapt to the most demanding clinical environments.

Attain immediate results and exploit all features of the VET dedicated platform

MyLab™X8VET integrates the latest technologies, delivering a high level of image quality without compromising workflow or efficiency.

MyLab™X8VET enables you to accelerate your workflow by setting customizable options.



Tablet-like touchscreen

Widescreen multi-function tablet-like touchscreen for uncompromising ease of use.



Fast system boot up

Fast system boot time from standby, for effective performance at the point of care.



Zero-click functions

Zero-click automation functions provide very fast interface usage and simplify complex procedures in different applications.



@asyMode & @asyColor

“One-Touch” image optimization through intelligent real-time algorithms.



Battery on board

Battery on board* to enable an autonomous cartbase.

*optional

Ergonomics and comfort without compromise



Based on a decade of experience, **MyLab™X8VET** delivers outstanding ergonomics and comfort in daily practice.

With creative solutions for both hardware and software, clinicians are provided with innovative tools.

- Simplified control panel
- Large touchscreen with tablet gesture also for displaying recorded images
- Intelligent real-time algorithms **@easyMode** and **@easyColor** to simplify the ultrasound image optimisation
- Smart automation functions like **@Doppler** and **@Scan** to increase the examination time efficiency



Limitless connectivity



MyLab™X8VET has been equipped with innovative connectivity tools to support remote connection and image sharing to meet today's challenges.

- Follow-up compares any second-modality DICOM images in real-time
- @Streaming safely shares real-time scanning activities with selected viewers
- MyLab™Tablet exports the full dataset to any tablet device following the examination
- MyLab™Desk enables the review of previous examinations



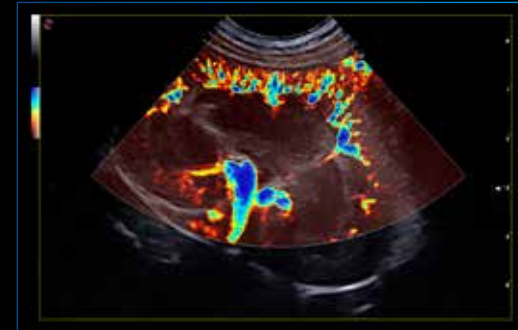
MyLabRemote exclusive function is the perfect tool to limit any physical contact with the ultrasound device through the duplication of the control panel on various mobile devices.

Large probe portfolio

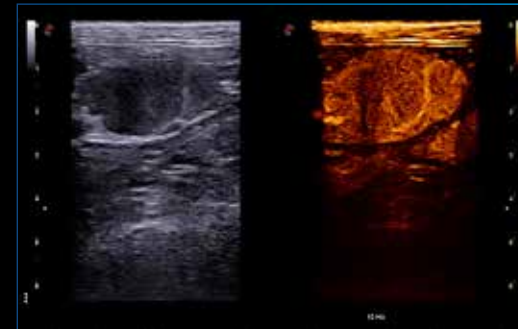


Esaote iQProbes meet gold quality standards, offering state-of-the-art technology for a large range of applications:

- Superb imaging outcome
- Lightweight, appleprobe ergonomics
- Reduced musculoskeletal strain of up to 70%
- Increased confidence

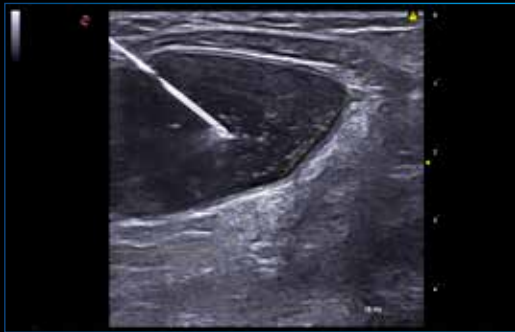


microV - fast non-invasive hemodynamic evaluation with high sensitivity for lesion characterization

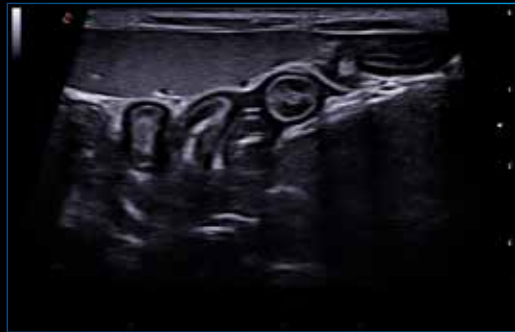


CnTI™ - advanced technology for Contrast Enhanced Ultrasound (CEUS) imaging

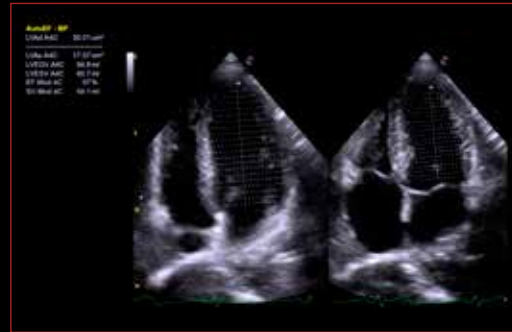
Imaging at your service including full cardiac package



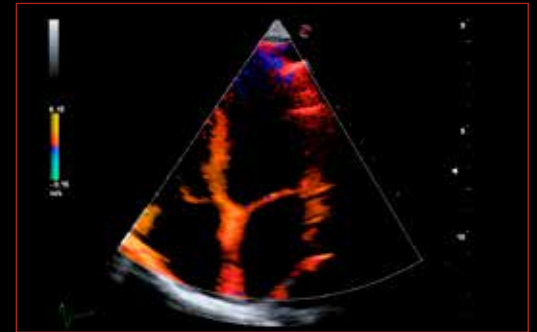
Needle enhancement - a valuable aid to interventional practice



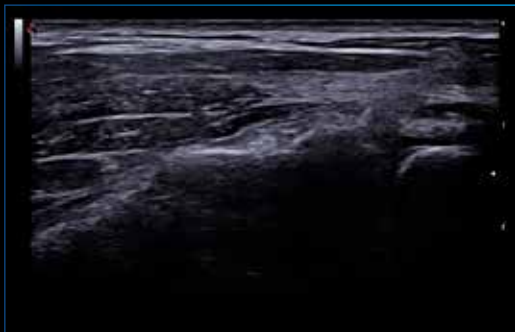
@Scan and @Speed - automatic optimization to get immediate top-class image quality



Zero-click AutoEF - automatic ejection fraction computation



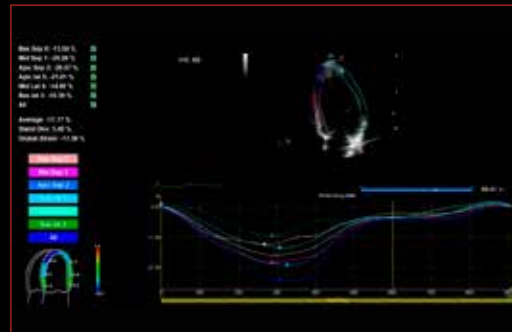
TVM - tissue velocity mapping



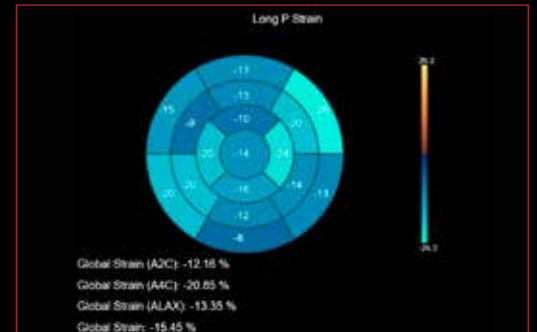
Very high superficial examination - high frequency up to 25 MHz



ElaXto and QElaXto - non-invasive assessment of tissue elasticity



XStrain™ and Bull's eye representation - endocardial velocity quantification & heart deformation detection





esaote
www.esaote.com



Esaote S.p.A. - sole-shareholder company
Via Enrico Meloni 77, 16152 Genova, ITALY, Tel. +39 010 6547 1, Fax +39 010 6547 275, info@esaote.com

MyLab is a trademark of Esaote spa. - Windows® is a registered trademark of Microsoft Corporation.
Technology and features are system/configuration dependent. Specifications subject to change without notice. Information might refer to products or modalities not yet approved in all countries. Product images are for illustrative purposes only.
For further details, please contact your Esaote sales representative.



Please visit us online
for more information