

Premium **Ultrasound**



Dedicated & Advanced

MyLabTMEight^{VET}

In today's veterinary practice, efficiency and productivity are of great importance. Changing clinical needs require medical equipment to deliver high performance, ease of use and innovative clinical solutions. The MyLabEightVET can cover all examination needs in your practice; any species and every application, from small to large dogs, cats, exotics to equine and farm animals.



Features

- 21.5" widescreen IPS monitor
- Single-crystal transducer technology
- Advanced clinical tools
- Broad connectivity options



Patient ID/Owner Name

The patient demographic screen is dedicated to the veterinary environment with fields for the animal's name as well as species and breed.



Application Selection

The veterinary application software makes it easy to choose from a list of applications before starting the examination. After selecting the application, the system automatically displays the presets corresponding to the chosen purpose. A dedicated application icon is shown on the screen, confirming that the correct settings are selected.



Measurements and Reports

Confirming Esaote's dedication to the veterinary world, complete veterinary measurement packages, including abdomen, cardiology and reproductive gestational calculations provide easy exam documentation.



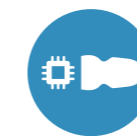
Body Marks

Using a body mark to show the exact position of the scan is useful. But being able to indicate this with a body mark that actually resembles the scanned species is even better.



Image Quality

In any application and with any probe, you can rely on excellent image quality to aid fast and accurate diagnosis.



Single-Crystal Transducers

MyLabEightVET incorporates the new eMpowered Engine to optimize high-density and single-crystal transducers to enable images to be captured at greater depth in the body with unprecedented quality for difficult-to-scan patients.



MyLabTMDesk

With MyLabTMDesk installed on your PC you can easily copy your whole archive from the ultrasound system for convenient reviewing and image processing.



Broad Connectivity Options

The system is equipped with wired and wireless connectivity that offers numerous data-saving and transmission options for easy networking and patient management.



Large probe portfolio

Our special lightweight transducers can cover all applications. Ranging from rectal veterinary transducers to high-frequency linear, convex and phased array transducers, they will meet every clinical need and user preference.



Small Animals



Confident diagnosis

Esaote's top-of-the-range ultrasound system combines the best of technology, quality and ergonomics. It makes your exam fast and easy. In all small animal applications, abdominal, MSK and cardiology the MyLabEightVET gives you the diagnostic confidence your clients deserve.

Equine & Farm Animals



Excellent image quality

Top horses examined by ultrasound specialists need the best clinical exam possible. With the MyLabEightVET you know you get the best images for tendon, the spine, abdomen, and cardiology. The new single-crystal probes combine deep penetration with the best possible resolution.

Transducers



SC3123
Abdominal scanning for small animals and exotics.

- 6-10 MHz
- Up to 133° scan angle



L4-15
All-round linear probe for any size of small animal.

- 4-15 MHz
- 47 mm



SL2325
High-frequency probe for superficial imaging in small animal and exotics.

- 6-19 MHz
- 35 mm



SL3116
Very high-frequency probe, ideal for kittens, puppies and exotics.

- 10-22 MHz
- 3 mm



PA250
Single-crystal phased array probe for cardiology in medium – big dogs.

- 1-5 MHz
- 22 mm



PA023
High-frequency phased array probes for small dogs and cats.

- 4-11MHz
- 13 mm

Transducers



SC3123
Specific probe for hoof and pastern scanning.

- 6-10 MHz
- Up to 133° scan angle



L4-15
All-round linear probe for deep and superficial tendons.

- 4-15 MHz
- 47 mm



C1-8
Single-crystal probe for abdominal imaging and scanning of the spine.

- 1-8 MHz
- 5-43 cm depth



PA250
Single-crystal probe for excellent cardio imaging.

- 1-5 MHz
- 89° scan angle
- 36 cm depth



SL2325
High-frequency probe for superficial imaging in small animal and exotics.

- 6-19 MHz
- 35 mm



IOE323
Dedicated linear array transducer for transrectal approach of spine and pelvis MSK.

- 4-13 MHz
- 5-37 mm footprint

Biopsy guides are available as an option for all relevant transducers

Biopsy guides are available as an option for all relevant transducers

Advanced technologies for advanced procedures

The MyLabEightVET provides impressive image quality in all modes and in a wide range of applications. Besides B-Mode, M-Mode and Doppler imaging, the systems offer multiple advanced technologies to meet every clinical need and user preference



CnTI™

With revolutionary real-time CnTI technology it is possible to implement innovative contrast media ultrasound procedures.



ElaXto

The ElaXto software enables non-invasive assessment of tissue elasticity.



Virtual Navigator

Virtual Navigator allows the real-time visualization of enhanced ultrasound images thanks to the fusion with CT and MRI images.



microV

High sensitivity, high spatial resolution, high frame rate hemodynamic analysis for micro vascularization in tissue perfusion. State-of-the-art sensitivity for superficial and deeper vessels for improved spatial resolution in real-time hemodynamic analysis.



3D

Esaote's volumetric technology takes full advantage of the touch panel to optimize both the workflow and ease of use, and represents a breakthrough in technology.



XStrain

XStrain makes it possible to estimate and quantify endocardial velocities during contraction and relaxation of the heart.



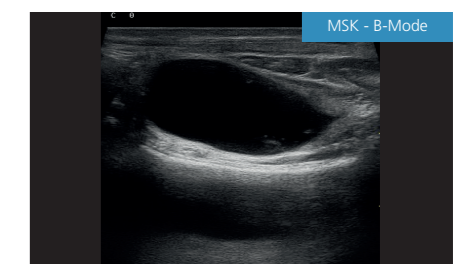
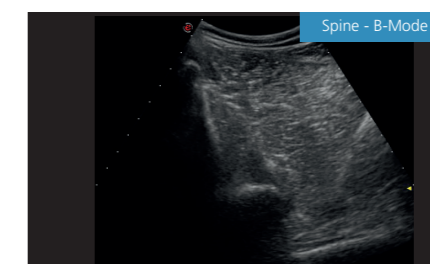
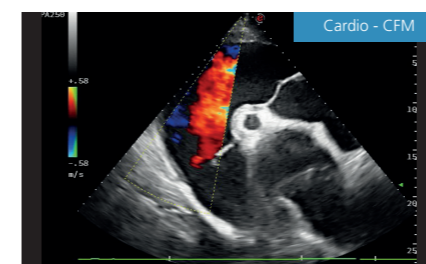
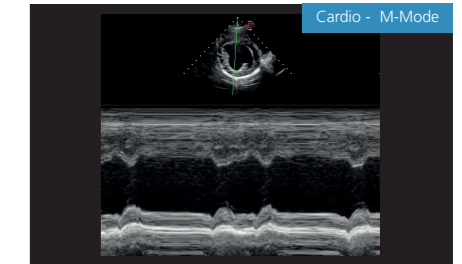
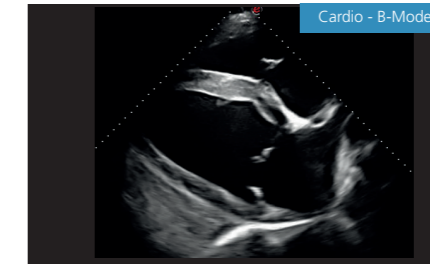
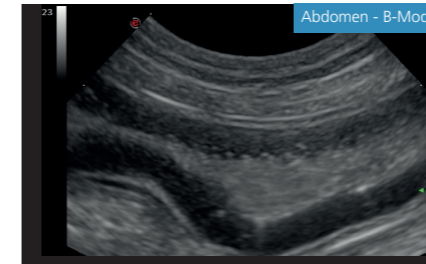
XFlow

XFlow provides extraordinary flow sensitivity and spacial resolution



MyLabRemote

Remote system user interface app that allows MyLabEight to be controlled via smartphone or tablet.





Join the Global Leader in Veterinary Imaging

Esaote is the pioneer in ultrasound and MRI in the veterinary field. Esaote has over 30 years of market leadership and is a preferred supplier for veterinary practices, clinics, and research centers, and also for many zoos and wildlife institutions.

Offering the perfect products in terms of quality, functionality, price, service, and education, combined with a deep understanding of veterinarians' needs, guarantees our top position in the veterinary imaging market.

Please challenge us with your imaging, ultrasound, and/or MRI needs in your daily practice or specific projects. We would love to be your imaging partner.

www.esaote.com/veterinary

160000121MA Ver.01



Esaote S.p.A.
Via E. Melen, 77 16152 Genoa, Italy, Tel. +39 010 6547 1, Fax +39 010 6547 275, esaote@pec.esaote.com



Technology and features are system/configuration dependent. Specifications subject to change without notice.
Information might refer to products or modalities not yet approved in all countries. Product images are for illustrative purposes only.
For further details, please contact your Esaote sales representative.