

MyLabTMX5 VET

Experience
Efficiency



NEVER STOP ELEVATING YOUR VET EXPERIENCE.

esaote
veterinary

Maximize your diagnostic efficiency



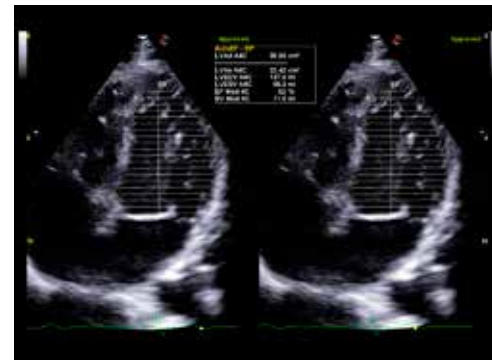
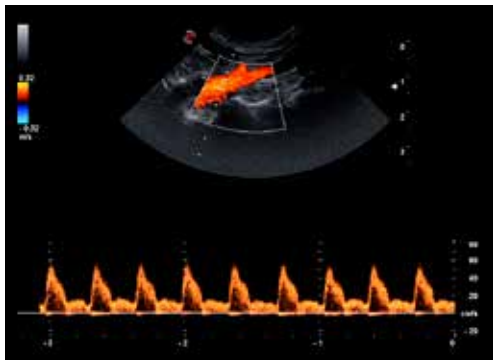
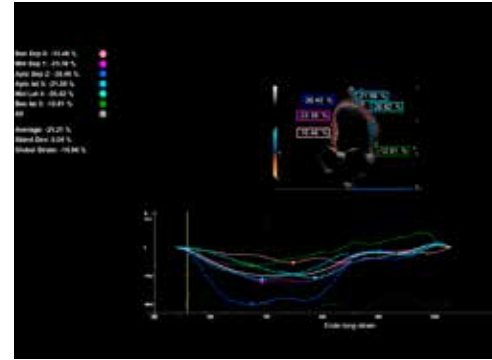
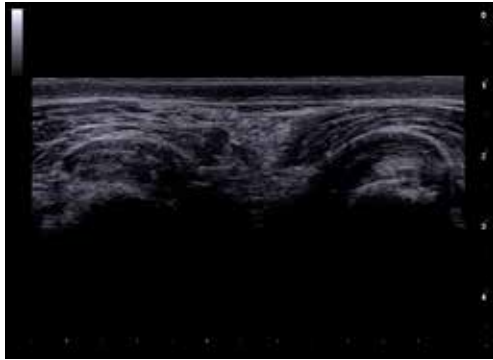
Zero-click technology: helps save you time and advanced imaging quality helps you diagnose with confidence



Extensive connectivity: advanced features allow sharing of ultrasound exams with others, even on tablets and portable devices



Enhance image quality and increase diagnostic capability



Single-probe approach - with just one probe you can make a complete medical imaging examination and simplify your everyday practice

XStrain™ and AutoEF - automatic, affordable cardiological tools



esaote
www.esaote.com



Esaote S.p.A. - sole-shareholder company
Via Enrico Meloni 77, 16152 Genova, ITALY, Tel. +39 010 6547 1, Fax +39 010 6547 275, info@esaote.com

MyLab is a trademark of Esaote spa. - Windows® is a registered trademark of Microsoft Corporation.
Technology and features are system/configuration dependent. Specifications subject to change without notice. Information might refer to products or modalities not yet approved in all countries. Product images are for illustrative purposes only.
For further details, please contact your Esaote sales representative.



Please visit us online
for more information