

CONFIDENCE

STRAIGHTAWAY



MyLab™ OMEGA

 **esaote**

CONFIDENCE STRAIGHTAWAY

MyLab™Omega is a high-end, portable, multidisciplinary ultrasound unit with an innovative and ergonomic design. It delivers the highest level of performance possible for any application. It offers extreme agility thanks to its onboard dual connector (4 with additional trolley multi-connector adapter), and extremely flexible with unique built-in touch screen in addition to its rotating and tilting monitor. The innovative onboard technologies include advanced zero-click automation tools. Such innovation supplies the ultrasound system with key elements to accelerate usability and improve diagnostic efficiency. Built on a new engine and operated by Windows® 10, it delivers new levels of accuracy, quality, versatility, and value.





FAST AND EASY



**COMPLETE ADVANCED
CLINICAL TOOLS**



**SWIVELLING
15,6" MONITOR**



**ZERO-CLICK
AUTOMATION**



**TWO SOCKET
CONNECTORS**



TOUCHSCREEN



**EXTENSIVE
CONNECTIVITY**



MyLab™ OMEGA

MOBILITY

MyLab™Omega can offer a large variety of mobile solutions to meet any possible need, application, and location.

The system can be simply operated placed on a desk or installed on a versatile height-adjustable trolley.

Furthermore, the system has an optional foldable trolley that can be easily transported in a car or transformer in back-pack solution. A trolley completes the system mobile solutions.



 **BATTERY OPERATED**

 **BOOTING TIME
LESS THAN 15 SEC***

 **DEDICATED
MOBILE SOLUTIONS**

(*) from stand-by mode

STRAIGHTAWAY

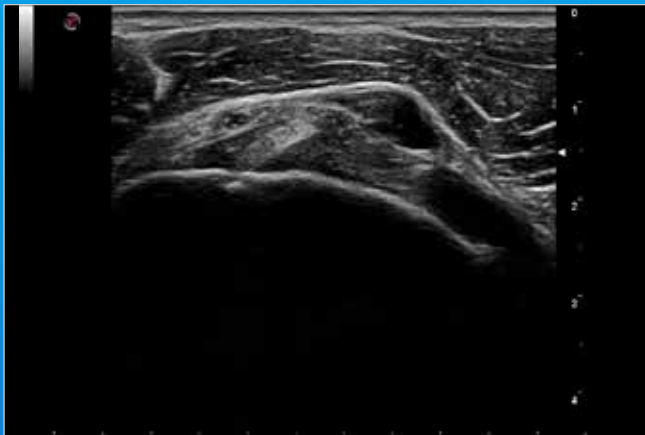


MyLab™ OMEGA

ULTRASOUND PILLARS



XVIEW+



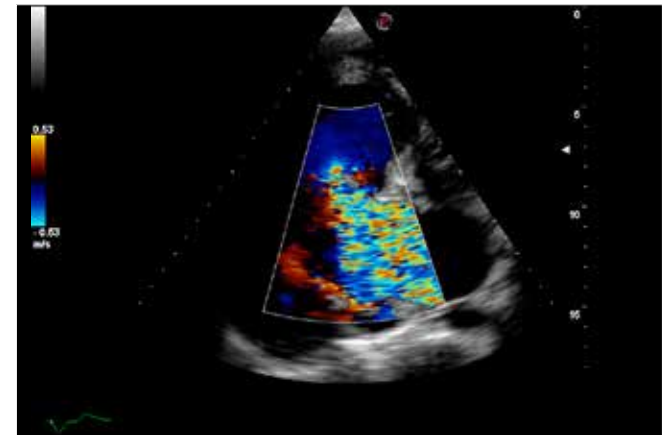
Speckle artefacts reduction is a very important function. Users must feel confident about the type of imaging they can acquire with an ultrasound system. For this reason the new XView+ speckle-reduction adaptive technology also features a balance setting function which operators can use to adjust the algorithm's behavior to their preference.

CPI



Difficult-to-scan patients are quite common in today's echo labs. Esaote's CPI technology helps in addressing these challenges, allowing sonographers to obtain detailed images even with obese patients and in deeper scanning areas

CFM



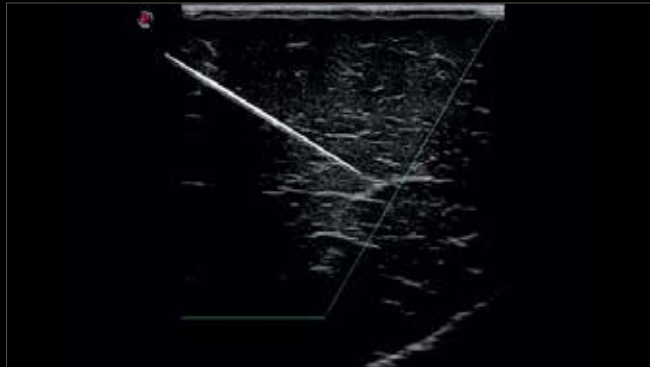
Different technologies are nowadays regularly used by clinicians for pathology characterization and diagnosis in all clinical applications. Covering a very large variety of potential uses, Color Doppler represents the pillar for detecting both high-velocity flows, such as in heart cavities or in big arteries, and low-velocity flows, such as in small and micro vessels (with or without Doppler enhancement contrast media).

MyLab™ OMEGA



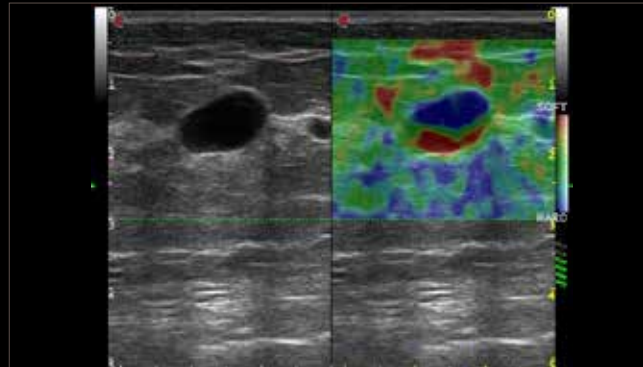
STRAIGHTAWAY

Esote's new **MyLab™Omega** covers all clinical needs, from abdominal to point-of-care applications, to establish a diagnosis and provide the best possible therapy and follow-up.



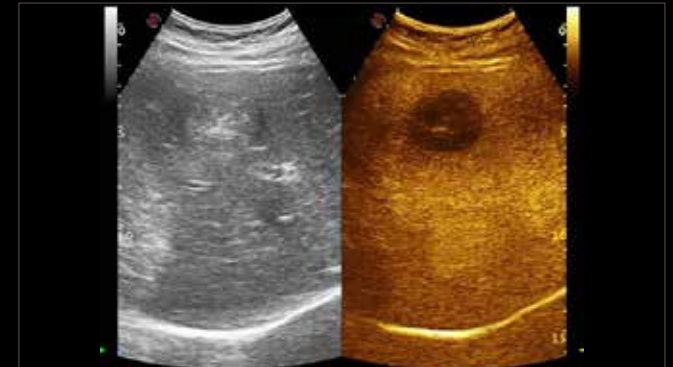
NEEDLE VISIBILITY

Enhanced and clear visualization of the needle during intervention procedure.



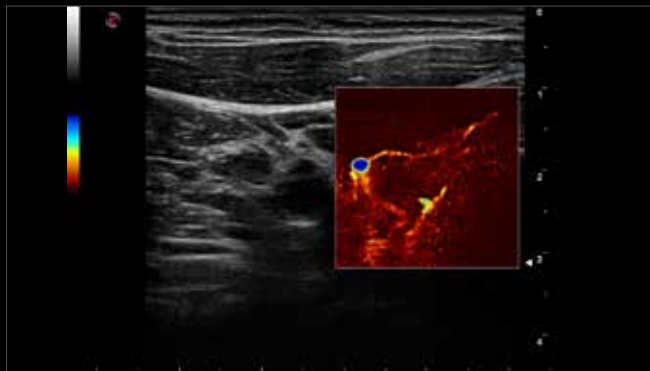
ELAXTO

ElaXto is a non-invasive method that supports the physician in assessing tissue elasticity.



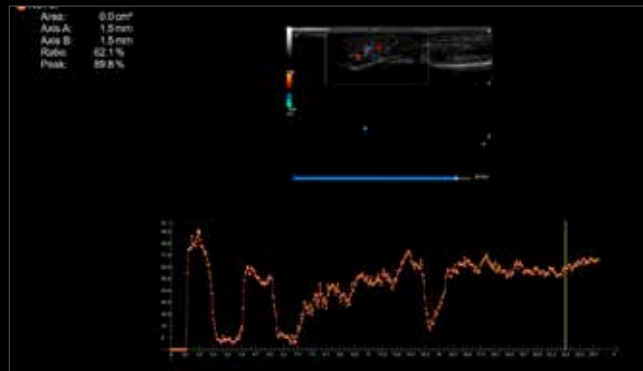
CNTI™

Contrast Enhanced Imaging technology for improved diagnostic performance.



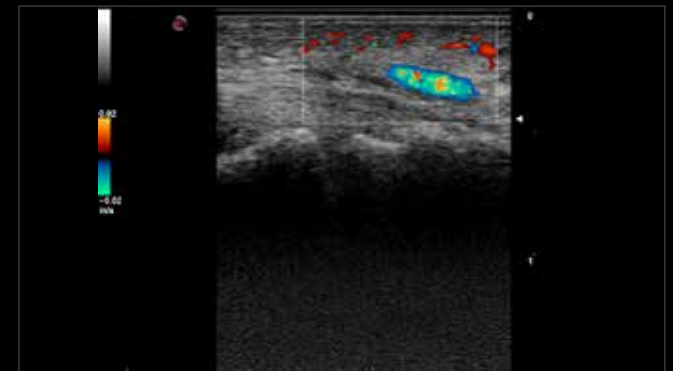
microV

High sensitivity and spatial resolution hemodynamic evaluation for lesion vascularization and characterization.



Q-PACK

Multi-modality quantification tool for curve analysis of Contrast Perfusion (Wi/Wo).



VERY HIGH FREQUENCY 22MHZ

Extreme high quality imaging and color Doppler on very very superficial applications.

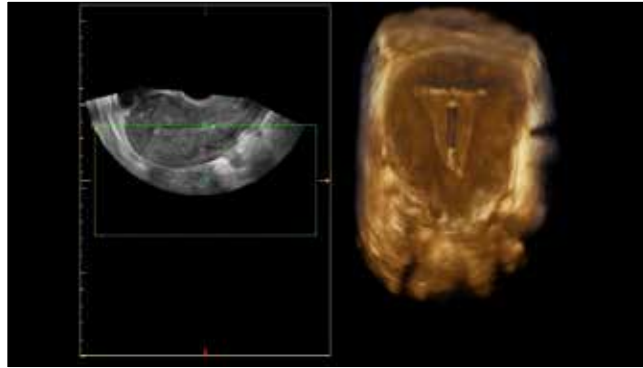
WH STRAIGHTAWAY

From Obstetric to Gynecology application, **MyLab™Omega** delivers basic and advanced technologies to support clinicians in their daily work.



XLIGHT

Advanced algorithm to improve volumetric rendering quality.



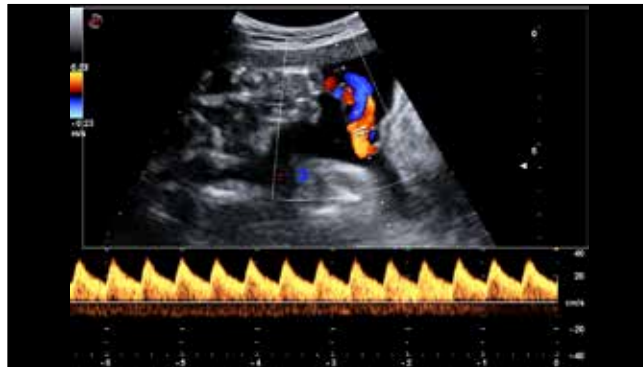
GYNECOLOGY 3D

Superb 2D imaging and perfect 3D reconstruction rendering.



FETAL HEART

High resolution imaging able to visualize any specific details.



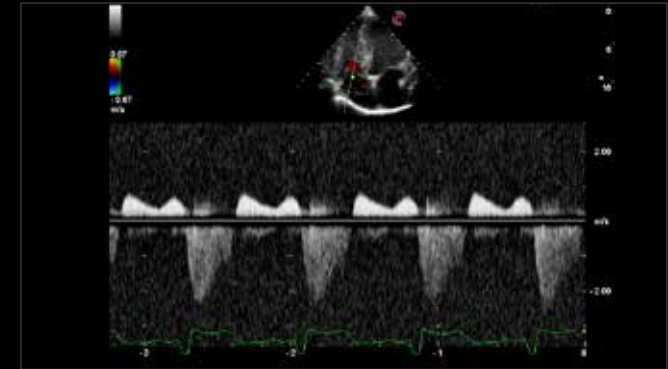
COLOR AND DOPPLER HIGH SENSITIVITY

Triplex mode on umbilical cord.



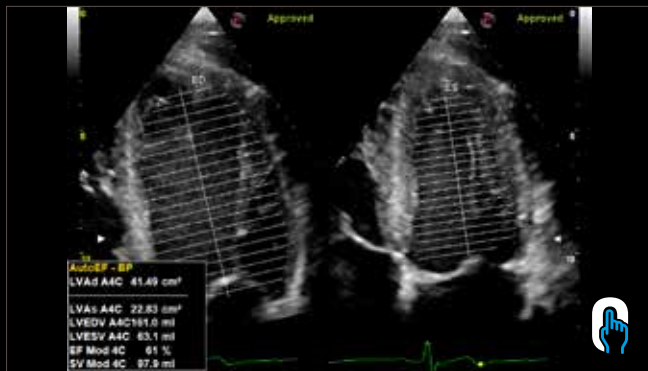
CV STRAIGHTAWAY

MyLab™OMEGA is equipped with comprehensive cardiac and vascular configurations. It is a complete system for any cardiovascular ultrasound exam featuring customizable measurements and reporting.



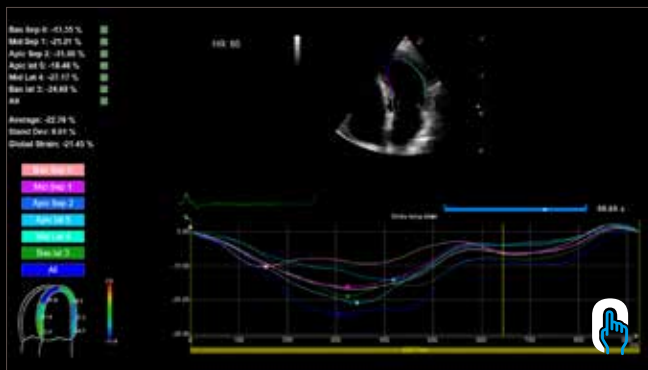
HIGH SENSITIVITY SPECTRAL DOPPLER

Moderate Tricuspid Valve Regurgitation - CW Doppler signal.



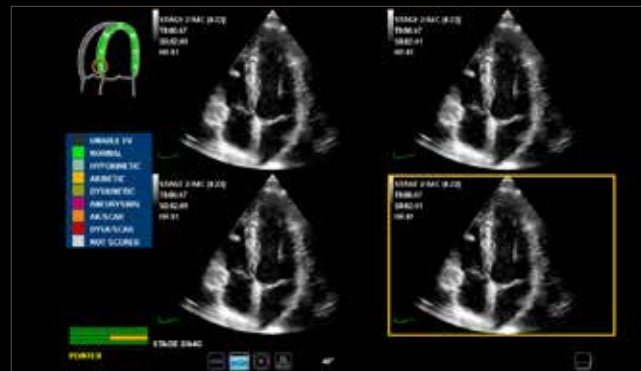
AUTOEF

"Zero-Click" automatic endocardial border detection speeds up EF measure and simplifies daily routine.



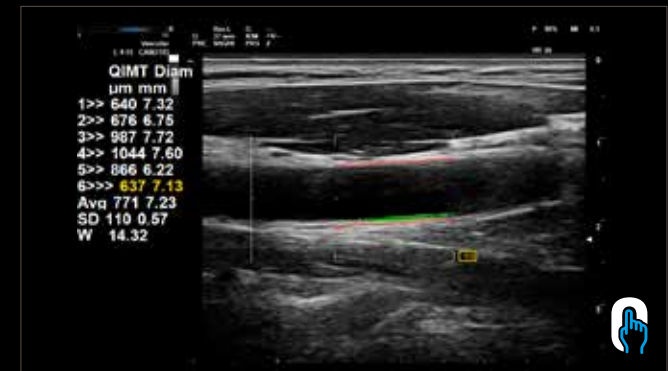
XSTRAIN™

Global strain bullseye (17 segments) as a result of the 3 apical GLS outcomes.



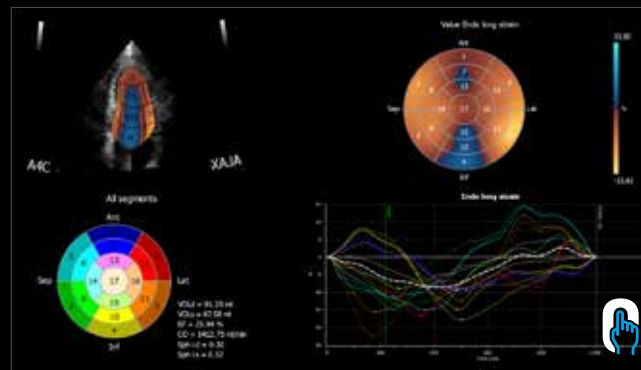
STRESS ECHO

Complete Stress echo package with flexible and customizable protocols.



QIMT

Automated real-time detection of Intima Media Thickness based on RF signal analysis.



XSTRAIN4D

Speckle tracking technology which provides a volumetric model of the heart's function.



QAS

RF based automated Carotid wall stiffness measurement including PWV, CC, AI, α , β indexes.

CONNECTIVITY STRAIGHTAWAY

In a fast-changing world where the value of information is increased by the possibility of sharing it, the highest level of clinical data management has to be offered to meet today's medical needs. The worldwide medical imaging community has entered a new era of communication opportunities.

Based on Windows® 10, these developments enable imaging professionals to reach diagnoses more effectively and efficiently, which can in turn raise the level of overall healthcare provided.



MyLab™ **OMEGA**



DICOM CONNECTIVITY
(INCLUDING QUERY/RETRIEVE)



MULTI-MODALITY ARCHIVE



WIRELESS CONNECTIVITY



MYLAB™ TABLET



@STREAMING





www.esaote.com

160000164MA Ver.03



Esaote S.p.A. - sole-shareholder company
Via Enrico Meloni 77, 16152 Genova, ITALY, Tel. +39 010 6547 1, Fax +39 010 6547 275, info@esaote.com

Windows® is a registered trademark of Microsoft Corporation. MyLab™Desk SW suite is not intended or provided for an official diagnostic interpretation.
MyLab is a trademark of Esaote spa. CnTI™: The use of Contrast Agents in the USA is limited by FDA to the left ventricle opacification and to characterization of focal liver lesions.
Technology and features are system/configuration dependent. Specifications subject to change without notice. Information might refer to products or modalities not yet approved in all countries.
Product images are for illustrative purposes only. For further details, please contact your Esaote sales representative.

Please visit us online
for more information

