

MyLabTMSigma VET

So Fast,
So Easy



NEVER STOP ELEVATING YOUR VET EXPERIENCE.

eSaote
veterinary

Smart and portable solution to allow ultrasound image whenever required



Easy to carry

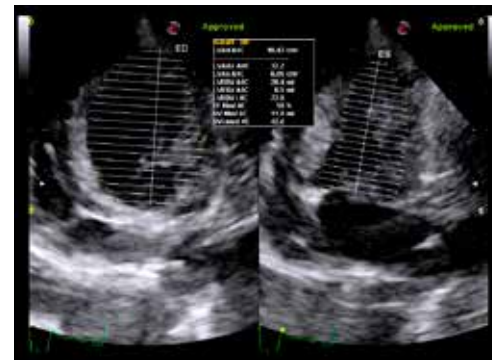
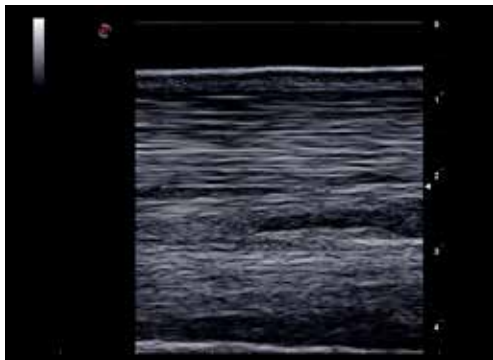
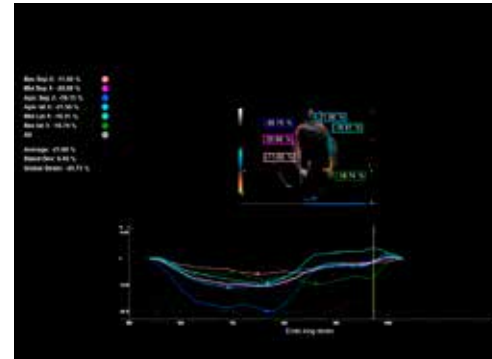
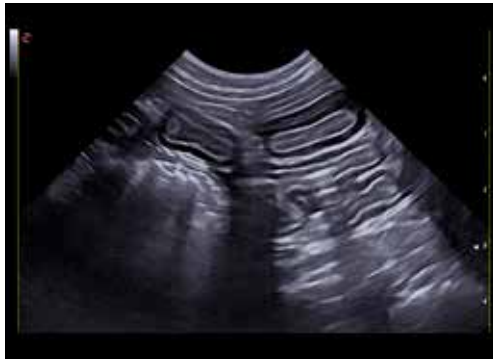


Dedicated VET software and probes



*from stand-by mode

The best image quality in the shortest time



Single-probe approach - with just one probe you can make a complete medical imaging examination and simplify your everyday practice

XStrain™ and AutoEF - high sensitivity and spatial resolution hemodynamic evaluation for tissue perfusion





esaote
www.esaote.com



Esaote S.p.A. - sole-shareholder company
Via Enrico Meloni 77, 16152 Genova, ITALY, Tel. +39 010 6547 1, Fax +39 010 6547 275, info@esaote.com

MyLab is a trademark of Esaote spa. - Windows® is a registered trademark of Microsoft Corporation.
Technology and features are system/configuration dependent. Specifications subject to change without notice. Information might refer to products or modalities not yet approved in all countries. Product images are for illustrative purposes only.
For further details, please contact your Esaote sales representative.



Please visit us online
for more information