



WALKING ON
THE BRIGHTER SIDE OF
ULTRASOUND IMAGING

MyLab™ X
Beyond ease



esaote



MyLab™ X5

Ultrasound imaging
beyond **ease**

With **Esaote's** new **MyLab™ X5**, has become so smart and simple, you will no longer need to worry about time-consuming adjustments.

Designed with unique ergonomics, the **MyLab™ X5** brings you total user comfort and usability that is **tailored to every clinical need** - all enabled through its swift responsiveness and its friendly interface.

Zero-click automations help you speed up your assessments and the **enhanced image quality** allows you to deliver them confidently and with utmost precision.

fast and easy





Fast and easy



Zero-click automation



Diagnostic confidence



Large probe portfolio



Large probe portfolio

Transducers are the core of Ultrasound technology. Integrating physics, electronics and geometrics in their design is **the greatest engineering challenge** of the Signal Processing Chain.

Transducers are the primary component of a Signal Processing Chain, the system that leads to the final diagnostic image. Although a great deal of time has been spent on the optimization of scan converters, post-processing algorithms, and sophisticated speckle-reduction technologies, **ultrasound transducers** remain a scanner's primary interface between patient and user.



The design, material, and manufacturing technology of transducers are the main determinants of an ultrasound system's image **quality**. Thanks to the innovation of gold standard ultrasound transducers, iQProbes offer state-of-the-art imaging.

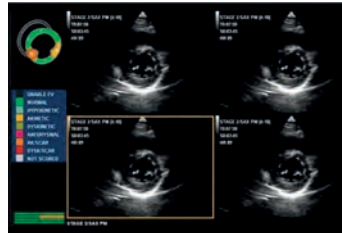
- ✓ Active matrix composite material
- ✓ Multiple adaptive layers
- ✓ Bi-con geometric lens
- ✓ appleprobe design
- ✓ Extensive use of applications with extended wideband convex, linear, phased array, volumetric, Intraoperative and special transducer shapes.

- ✓ Battery
- ✓ Booting time less than 15 sec*

*from stand-by mode



Stress echo



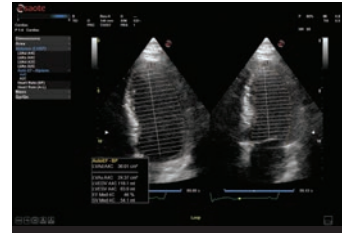
Complete Stress Echo package with flexible and customizable protocols for imaging acquisition and review.

Needle visibility



A clear and enhanced image of the target area during intervention procedures. The technology enables users to see the target structures and needle tip in order to automate the entire procedure.

AutoEF



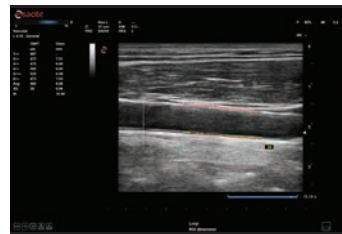
Automatic measurement of the EF fraction (entirely automated).

AutoNT



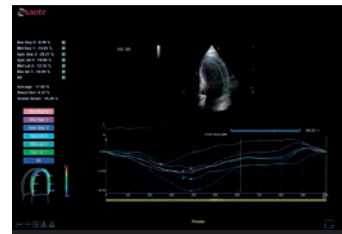
Automatic measurement of the Nuchal Translucency (NT).

QIMT



Automated real-time detection of Intima Media Thickness, including standard deviation and reliability index, based on RF signal analysis.

XStrain™



Global strain bullseye (17-segments) as result of the 3 apical GLS outcomes.



Cardiovascular

The MyLab™X5 is equipped with comprehensive cardiac and vascular configurations. It functions as a complete system for ultrasound cardiovascular examination, and features customizable measurements and reporting.

Women's health

The convex and endo-cavity probes provide excellent image quality for women's health application needs. The 3D probe can also be used for standard examination.

General imaging

Esote's new MyLab™X5 covers any clinical need: from abdominal to endocrinology applications; to diagnosis, therapy, and finally follow-up.



MyLab™ X5



Please visit us online
for more information



Esaote S.p.A. - sole-shareholder company
Via Enrico Meloni 77, 16152 Genova, ITALY, Tel. +39 010 6547 1, Fax +39 010 6547 275, info@esaote.com

MyLab™ is a trademark of Esaote SpA.
Technology and features are system/configuration dependent. Specifications subject to change without notice. Information might refer to products or modalities not yet approved in all countries.
Product images are for illustrative purposes only. For further details, please contact your Esaote sales representative.