

MyLabTM9 VET

Just Perfect



NEVER STOP ELEVATING YOUR VET EXPERIENCE.

eSaote
veterinary

ultra clarity

ultra workflow

ultra performance

ultra v+alue

Beyond Performance and Value

Esaote's new ultra-performance **MyLab™9VET** ultrasound system is designed to support a full range of shared service diagnostic imaging environments.

Take ultra-control of your images with unique visualization tools, and view results with clarity and sensitivity to help make more informed clinical decisions.

Experience the ultra-comfort of Italian-designed ergonomics and an ultra-easy user interface that increases productivity. The MyLab™9VET ultrasound system provides unprecedented power to drive more confident, better informed diagnostic decisions without compromise, at an ultra-value.

Get the benefit of dedicated VET probes and user interface

Esaote's ultra-performance MyLab™9VET is designed to provide high-level image quality guaranteed by the new state-of-the-art technologies to elevate your diagnostic experience.



Dedicated VET software and probes



Zero-click technology



Windows® 10



Full-screen visualization



Quick start-up



Highly responsive capacity touchscreen



- Italian design
- Simplified Control Panel
- Eco-friendly

Beyond Performance and Value



The **MyLab™9VET** system takes advantage of over 40 years of Italian engineering and design to offer an ultra-ergonomic experience, starting with its floating keyboard, tablet-like touchscreen and full HD wide format screen. Clinicians will also benefit from:

- **@asyMode** unique touch-tool for image optimization through intelligent real-time algorithms
- **Opti-Light** integrated into the monitor to illuminate the room ensuring the best environment for optimal scanning
- **appleprobe** innovative design which reduces musculo-skeletal strain up to 70%, for better user experience and comfort in clinical practice





@easyMode

Resolution

Contrast

Smooth

Penetration

Soft

Sharp

Superficial

Fast

Large

Deep

Slow

Small

@easyColor

40+
imaging
optimization
parameters
adjusted
in 3 swipes

Ultra connectivity

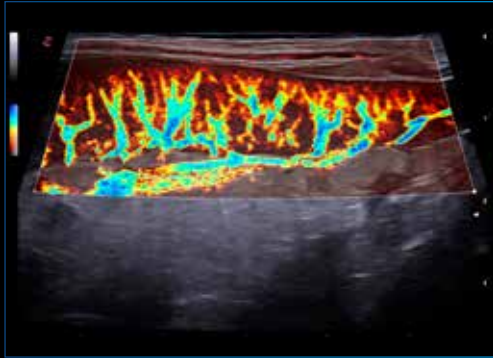
Streaming technology allows **real-time streaming** of ultrasound exams together with picture-in-picture camera on tablet, phone or laptop, opening a new era in connectivity.

Multimodality Archive as the key-point for effective patient follow-up:

- Full **DICOM** connectivity including Q/R
- MyLab™Desk
- MyLab™Tablet



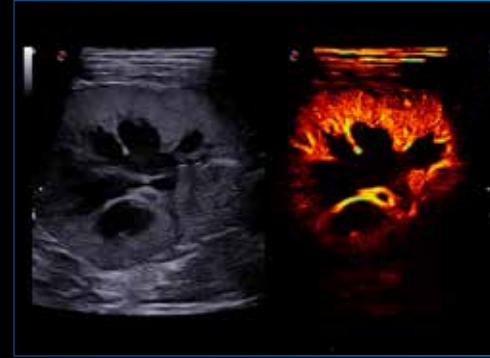
Advanced diagnostic tools on board



microV - fast non-invasive hemodynamic evaluation with high sensitivity for tissue perfusion



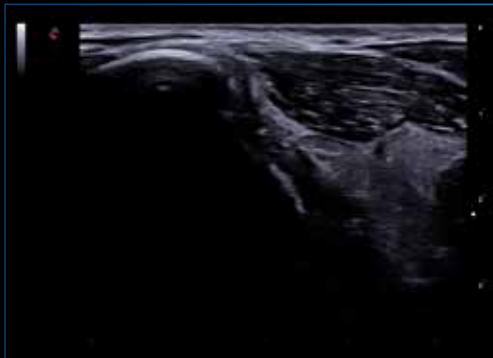
QeIaXto 2D - non-invasive assessment of tissue elasticity



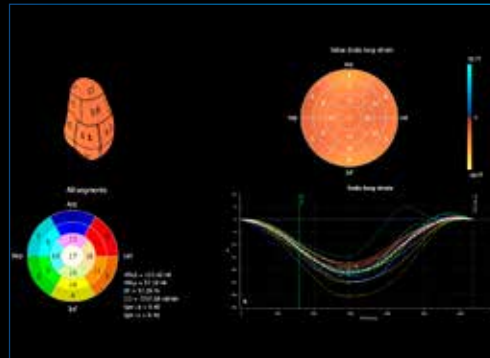
CnTI™ - advanced technology for Contrast Enhanced Ultrasound (CEUS) imaging



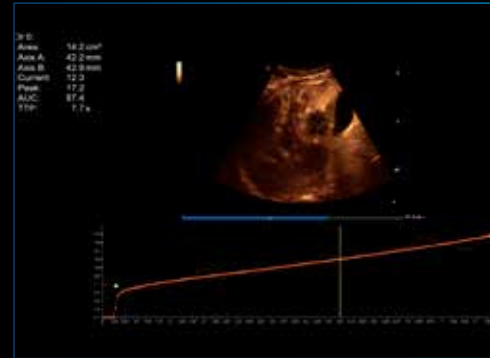
Zero-click AutoEF - automatic ejection fraction computation



25 MHz probe - high-resolution images



XStrain™ - endocardial velocity quantification & heart deformation detection



QPack - multimodality quantification tool for CnTI™, Color & Power Doppler detection



CPI - Combination of low/high frequencies modulation



esaote
www.esaote.com



Esaote S.p.A. - sole-shareholder company
Via Enrico Meloni 77, 16152 Genova, ITALY, Tel. +39 010 6547 1, Fax +39 010 6547 275, info@esaote.com

MyLab is a trademark of Esaote spa. - Windows® is a registered trademark of Microsoft Corporation.
Technology and features are system/configuration dependent. Specifications subject to change without notice. Information might refer to products or modalities not yet approved in all countries. Product images are for illustrative purposes only.
For further details, please contact your Esaote sales representative.



Please visit us online
for more information