



S-scan  
OPEN

Open to the  
Future

NEVER STOP SEEING THE UNSEEN.

esaote

# S-scan Open, a new dawn in medical technology



# S-scan Open, an evolution in diagnostic excellence

Starting from extensive customer feedback, research and development efforts, Esaote has specifically re-designed the S-scan Open, rooted in tradition to meet the demanding needs of any practice with a musculoskeletal workload.

Incorporating the latest Esaote MRI technology, in terms of software platform and design, S-scan Open is the perfect convergence of the most innovative Italian technology and a customer-driven MRI to serve users' need for diagnostic efficacy and cost per exam.

The S-Scan Open innovates with every pulse and every beat guaranteeing uncompromised diagnostic quality with low operating costs.

## Innovation through tradition

Esaote MRI systems are used daily in thousands of clinics and hospitals all over the world for routine clinical and diagnostic use in **traumatology**, **orthopedy** and **sports medicine areas**, as well as for ongoing medical research and meticulous scientific studies.

What characterizes the S-scan Open is its **ease of use**, thanks to the **ergonomic design**, the real-time image display and its very wide and asymmetric rotating table, which guarantees **maximum stability and comfort** in patient positioning, easy setup, and great images.

The open magnet design provides a more comfortable and **claustrophobia-free MRI** experience for all patients, including children.



# Faster, better, more versatile

## eXP Performance enhancements

By combining sophisticated acquisition and reconstruction methods such as SpeedUp and TR reduction, eXP will substantially improve the MRI examination by notably reducing scan times and improving image quality whilst limiting artifacts and background noise.



### Increased productivity

Scan more patients per day:



### Enhanced diagnostic

With the same protocol time:

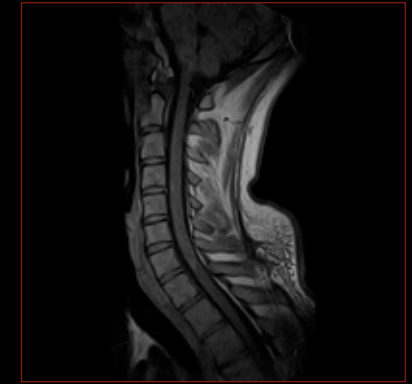
- Increased image resolution.
- Extra sequences and more flexibility.



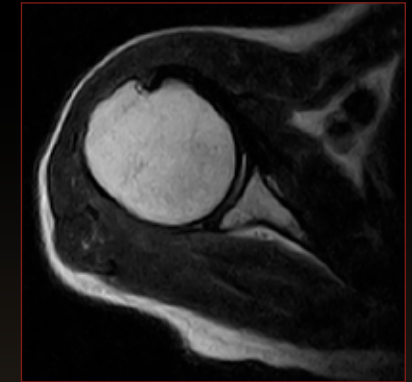
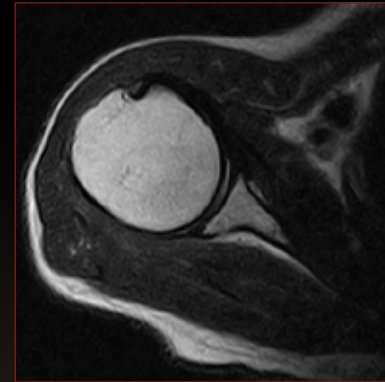
### Improved patient experience

Reduced scan time means:

- More time for patient care and comfort.
- More time to clean and disinfect the system.



With **@XP 32% faster**



With **@XP 28% faster**



Res **0.56 × 0.78**



More resolution - Res **0.43 × 0.625**



## True-Motion, the power of dynamic imaging

It is possible to expand your clinical horizons by integrating your daily routine with dynamic sequences based on the patient's symptomatology, in order to get a specific and unique diagnosis.

With the implementation of True-Motion, and thanks to the open magnet design, S-Scan Open allows the operator to perform MRI with patients performing specific joint movements, providing real-time information.

This procedure may be beneficial for pathologies that may not be visible with standard static examinations, adding value for post-operative analysis and relevance in the evaluation of clinical conditions for targeted and customized treatments.



Knee coronal view



Cervical sagittal view



## Metal Artifact Reduction, Open to all

The population with metal implants is steadily growing and artifacts related to the presence of devices can negatively affect an adequate assessment of the pathologies. MAR (Metal Artifact Reduction) uses a sophisticated gradients management system to suppress or reduce inplane metal distortions ensuring excellent SNR and soft tissue integrity in areas close to metal devices.

With this feature, S-scan Open offers optimal image quality **examination for the entire population**, increasing diagnostic efficiency in the follow-up of all patients with clips and prostheses.

# Consistent image quality

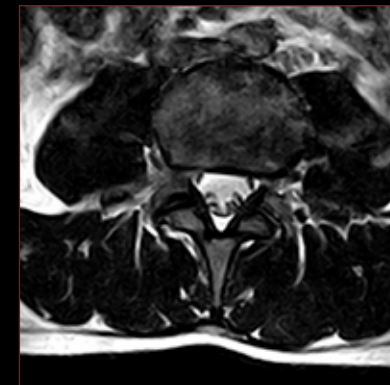
Designed on a renovated technological platform S-scan Open offers a superior image quality experience thanks to the application of new image enhancement profiles.



L-spine FSE T2 Sagittal



L-spine SE T1 Sagittal



L-spine 3D Hyce



Hand XBONE Coronal



Wrist 3D SHARC Coronal



Wrist GE Coronal



Thumb 3D SST1 Sagittal



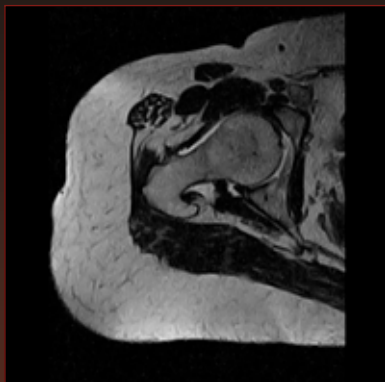
Elbow SPED Fat suppression Sagittal



Elbow GE Sagittal



Hip SE T1 Coronal



Hip 3D HYCE Axial



Ankle SE T1 Sagittal



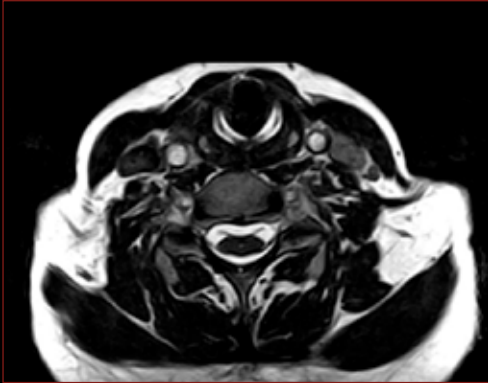
Ankle FSTIR Coronal



Foot XBONE Coronal



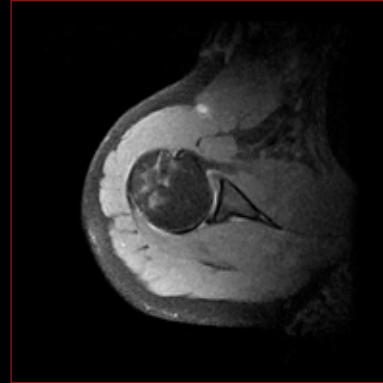
Cervical Spine FSE T2 Sagittal



Cervical 3DHyce Axial



T- Spine FSET2 Sagittal



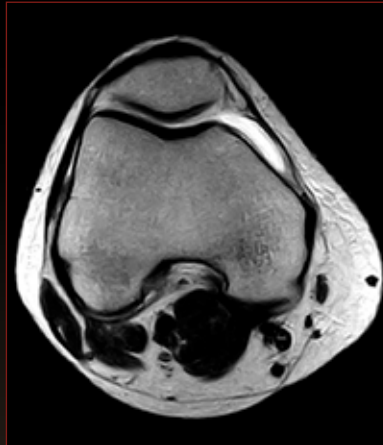
Shoulder SPED Fat suppression Axial



Knee 3D SHARC Sagittal



Knee SPED Fat suppression Coronal



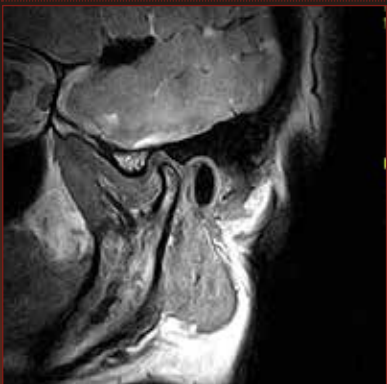
Knee FSE T2 Axial



Shoulder SE T1 Coronal



Shoulder 3D SHARC Coronal



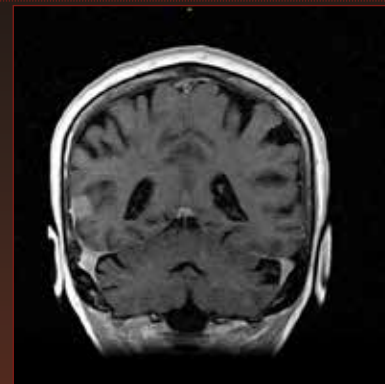
TMJ 3D SHARC Sagittal



Head SET1 post contrast



Head FSE T2 Axial



Head 3D SST1 Coronal



Head FLAIR Axial



# S-scan Open coils



SHOULDER  
Coil DPA



KNEE  
Coil DPA



WRIST/HAND  
Coil DPA



ANKLE/FOOT  
Coil DPA



CERVICAL SPINE  
Coil complete with flexion  
and extension options



SHOULDER  
Coil



OPTIONAL  
CERVICAL SPINE  
Coil DPA



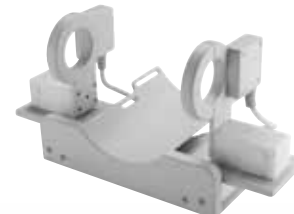
OPTIONAL 4 CHANNEL  
LUMBAR SPINE  
Coil (two different sizes)



OPTIONAL LUMBAR  
SPINE  
Coil DPA



OPTIONAL FLEXIBLE  
Coil



OPTIONAL BILATERAL TMJ  
Coil



OPTIONAL SHOULDER



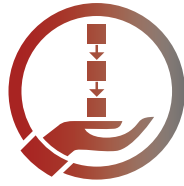
OPTIONAL HEAD

S-scan Open comes with a complete set of RF coils to maximize sensitivity to the specific anatomies under exam. This ample selection of dedicated coils guarantees a high signal-to-noise ratio (SNR) with a great signal homogeneity providing exceptional spatial resolution.





# Open to customers for patient care



## Examination workflow

New dedicated imaging protocols, from foot to shoulder, to cover all musculoskeletal anatomies. Included with optional coils, spine, and head protocols. S-scan Open guarantees fast examinations without compromising diagnostic quality.



## Ease of use

Esaote S-scan Open offers a User Interface up-to-date with the latest Microsoft Office™ standards to shorten the learning curve, focused on getting the work done without losing the flexibility to customize scans whenever needed.



## Patient positioning

Open ergonomic system, coils in constant evolution, easy-access bed, real-time image display. S-Scan Open is an enhanced system with the well-known Esaote, easy, fast, and comfortable patient positioning.





# The heartbeat of care. The breath of sustainability.



## Return on investment

S-scan Open has been developed in line with the Esaote MRI philosophy which means:

- Compact installation
- Easy operation
- Minimized total cost of ownership
- Dedicated service contracts.



## Sustainable MRI

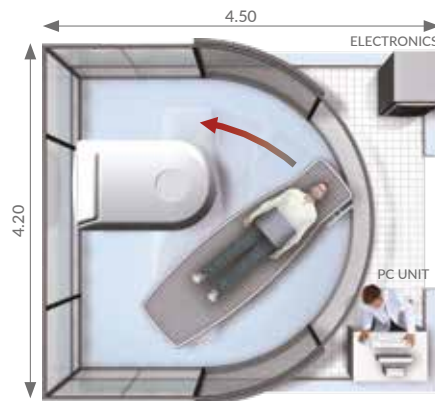
Low power consumption (maximum 3 Kw)

- No cryogenes, no water cooling
- Helium frees.



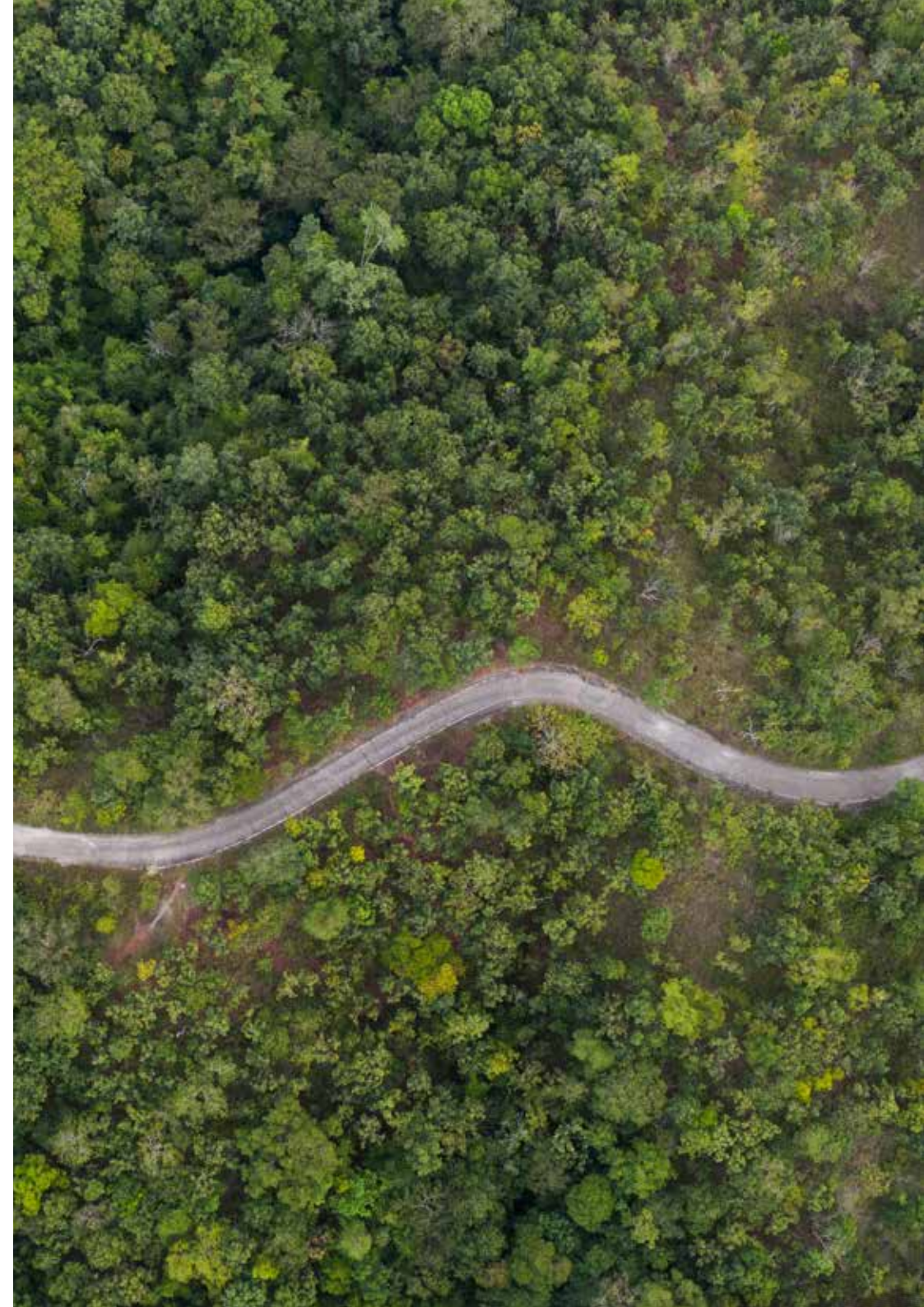
## Customer friendly

Thanks to its smart design the magnet unit and RF shielding will fit in a space of 20 m<sup>2</sup> (216 sq. ft.).



Typical example

\*Cage is optional.





# Connectivity and Integration

# System Life Cycle Protection\*

S-scan Open includes complete networking and storage features to work either stand alone or as part of an integrated environment.

## Data security

The system is in line with today's requirements for data security with automatic antivirus security updates.

## Standalone operation

As a stand-alone scanner, S-scan Open comprises an integrated DVD storage and retrieve software package, printer output facility and a patient-CD package.

## Network operation

S-scan Open is DICOM and IHE compliant and offers smart solutions for connectivity to your PACS and teleradiology.

## Remote service and customer care

All Esaote systems come with remote service capability. Many system parameters and system components can be checked via the remote service program specially developed for Esaote MRI systems. The remote service capability allows Esaote to react to any potential issue and to get you up and running faster!

## Ready for the future

Esaote MRI systems are built for the future. **The MDR classification** of the system can keep up with technological advances to satisfy market needs, protecting customers' investments over the years.



## Esaote MRI

One of the top 10 diagnostic imaging providers, respecting the highest quality standards in production and customer service processes.



\* Network connection to be provided by the installation site



[www.esaote.com](http://www.esaote.com)

160000457MA Ver.01



Esaote S.p.A. - sole-shareholder company  
Via Enrico Melen 77, 16152 Genova, ITALY, Tel. +39 010 6547 1, Fax +39 010 6547 275, [info@esaote.com](mailto:info@esaote.com)

Technology and features are system/configuration dependent. Specifications subject to change without notice.  
Information might refer to products or modalities not yet approved in all countries. Product images are for illustrative purposes only.  
For further details, please contact your Esaote sales representative.

Please visit us online  
for more information

